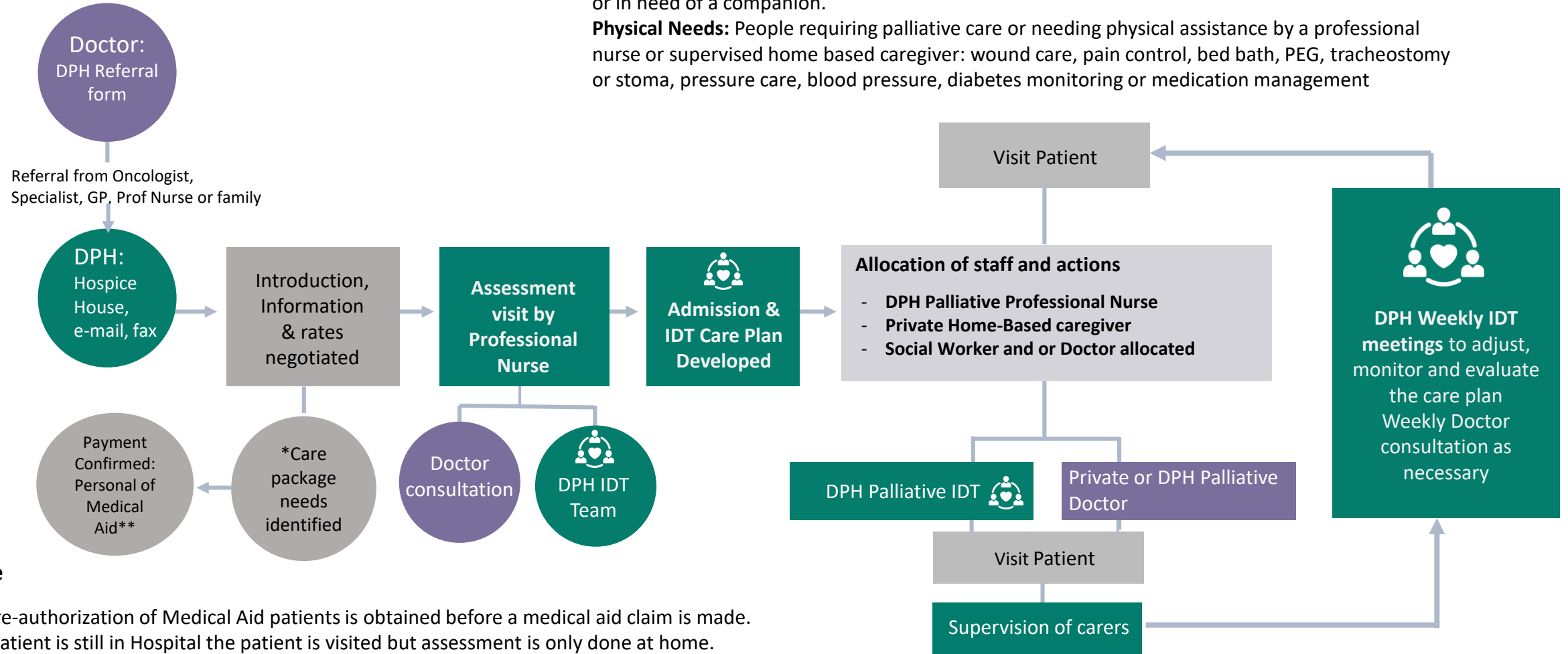


DRAKENSTEIN PALLIATIVE HOSPICE METHOD

Private (Paid) Care Pathway



ADMISSION CRITERIA

Diagnosis: Cancer or terminal diabetes, terminal CVA, TB, HIV, congestive cardiac failure, motor neuron disease, severe dementia etc., requiring holistic palliative and home-care in support of physical (active symptom management and support of physical needs), emotional and social support or in need of a companion.

Physical Needs: People requiring palliative care or needing physical assistance by a professional nurse or supervised home based caregiver: wound care, pain control, bed bath, PEG, tracheostomy or stoma, pressure care, blood pressure, diabetes monitoring or medication management

Note

- ** Pre-authorization of Medical Aid patients is obtained before a medical aid claim is made.
- * If patient is still in Hospital the patient is visited but assessment is only done at home.
- * Non-medical aid patients who require more than the free service, payment for service is required before commencement of 'extra' HBC service.
- * Written permission from patient needs to be obtained for sharing any patient information.